

Review for Comprehensive Test #2 on Tuesday November 28, 2017

This will be a comprehensive test that covers Topics 4-6 (Ch.2, 3.3-3.8 and 5.1-.5.3)

Note: An approved calculator will be allowed for the Test

Topic 4- Trigonometric Ratios Ch 2 (2.1-2.7)

Concept #	Concept	Review Questions
15	2.1/2.4 Correctly set up the primary trigonometric ratios (sin, cos, tan) for acute angles in right triangles (C)(Skill & Problem Solving)	Pg 124 #2 Pg 127 #1
16	2.1/2.4 Correctly solve for an acute angle measure in a right triangle using the primary trig ratios (C) (Skill & Problem Solving)	Pg 131 #14, 17, 18,21
17	2.2/2.5 Correctly solve for a side length in a right triangle (using primary trig ratios and/or the Pythagorean Theorem) & solving entire triangles (C) (Skill & Problem Solving)	Pg131 #15,16, 19, 20
18	2.7 Solve problems involving one or more than one right triangle (C) (Skill & Problem Solving)	Pg 131 #22 Pg 127 #6 Pg 126#23

Topic 5 – Polynomials (Multiplying and Factoring) (3.3-3.8)

Concept #	Concept	Review Questions
19	3.5/3.6 Correctly multiply two binomials (NC) (Skill)	Pg 252 #12 (Just expand and simplify)
20	3.7 Correctly multiply a binomial by a trinomial and a trinomial by a trinomial (NC)(Skill)	Pg 253 #16, 17
21	3.5 Correctly factor using GCF and a trinomial $x^2 + bx + c$ by method of choice. (NC) (Skill)	Pg 199 #19,21
22	3.6 Correctly factor using GCF and a trinomial $ax^2 + bx + c$, where $a > 1$ by method of choice (NC)(Skill)	Pg 200 #25 Pg 252 #14cd
23	3.8 Factoring using GCF and/or all of the above (including perfect square trinomials, trinomials in two variables, difference of squares) (NC)(Skill)	Pg 253 #15, Pg 200 #32

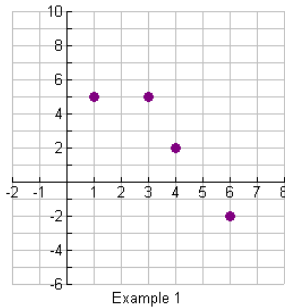
Topic 6 – Relations and Functions (5.1-5.3)

Concept #	Concept	Review Questions
24	5.1/5.2 Be able to express relationships in a variety of ways & correctly identify whether that relationship is a function or not with justification (NC)	Pg 326#1,3, 9 pg 459 #10,11a
25	5.2 Correctly determine the domain and range of linear & non-linear relations using interval notation, set notation or lists (NC)	Pg 459 #11b, #14, 16c
26	5.3 Sketch a graph to represent a situation, interpret a given situation, be able to identify the independent and dependent variables and determine if the data points should or should not be connected on the graph (discrete or continuous) (NC)	Pg 459 #12,13 pg 326 #6, 7 Pg 327 #8 pg 286 #1,2

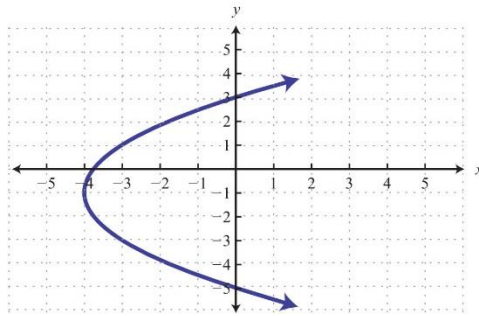
Additional Questions:

1. Find the domain and range of the following graphs. Are they functions or not?

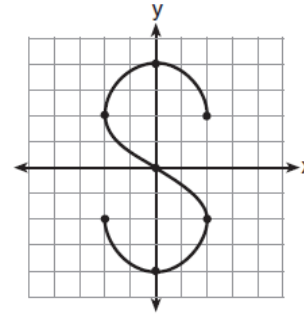
a)



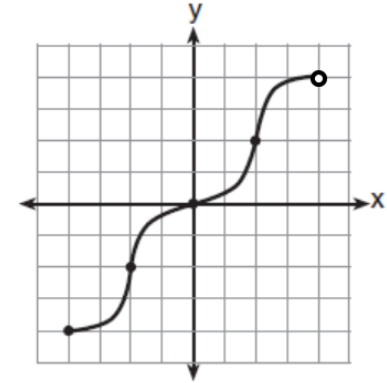
b) Interval Notation



c) Set Notation



d) Interval & Set Notation



2. Draw a fully labelled graph to accompany the following situation:

Jonah is watching television. After 3 min his mom enters the room to ask him a question. He turns the volume down a bit, answers his mom, then turns the volume back up. Two minutes later, Jonah's dad turns on the dishwasher so Jonah gradually turns up the volume. After a further 3 minutes, a commercial comes on so Jonah presses the mute button."